

## The DSP 2CH UART SIM21 is

- > Small size simulator
- > Connect to Use Stand-Alone Operation
- > Flexible(Remote operation by Ethernet or RS485)
- > Two Channel Simulator (KFX MC, HUD)



### Features

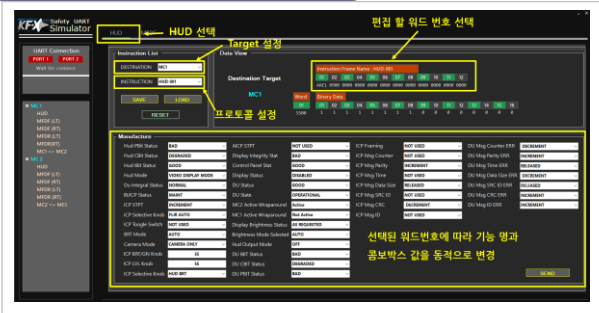
- Ethernet/RS485 Port
- Mission Computer Function
- AirCRAFT HUD Function
- PC GUI easy Interface
- AirCRAFT Interface
  - MIL-STD-1553B Data Bus Control
- RS422/RS485 Interface
  - 2 Channel Simulator

### Connector Information

| J1        | BR-508SLH-5 | BR-508B-5        |
|-----------|-------------|------------------|
| Part Name | SIMULATOR   | MISSION COMPUTER |
| 1         | SIM_MC_TX+  | MC_RX+           |
| 2         | SIM_MC_TX-  | MC_RX-           |
| 3         | SIM_MC_RX+  | MC_TX+           |
| 4         | SIM_MC_RX-  | MC_RX-           |

| J2        | BR-508SLH-5 | BR-508B-5        |
|-----------|-------------|------------------|
| Part Name | SIMULATOR   | MISSION COMPUTER |
| 1         | SIM_HUD_TX+ | HUD_RX+          |
| 2         | SIM_HUD_TX- | HUD_RX-          |
| 3         | SIM_HUD_RX+ | HUD_TX+          |
| 4         | SIM_HUD_RX- | HUD_RX-          |

### HUD Screen



### MC Screen



### Ordering Information

- DSP\_2CH\_UART\_SIM21

### Environment Information

- Operating temperature range  
Commercial : 0 °C ~ 45 °C
- Storage temperature range  
-25 °C ~ 85 °C

### Contact

TEL : +82-70-7151-3240,

E-Mail : jpark@sungjindsp.com